



Report to the Community

2007-2008

Superintendent's Message

The Abbeville County School District is a quality public school system serving approximately 3,600 students. All of our schools are accredited by the Southern Association of Colleges and Schools/ Council on Accreditation and School Improvement (SACS/CASI). The Abbeville County School District has a supportive Board of Trustees as well as a dedicated faculty and staff. Our most important resource is our students!

Our mission is to develop proficient, creative, self-motivated students by providing quality educational opportunities in a safe, nurturing environment, which supports innovations and lifelong learning.



Abbeville County School District Office
400 Greenville Street
Abbeville, South Carolina 29620

Palmetto Gold Award Winners

This year two schools earned the Palmetto Gold Award. The Palmetto Gold Award is awarded to schools that attain high levels of absolute performance and schools that attain high rates of improvement.

Abbeville County Career Center received \$3,030 to be used as they see fit in supporting their programs.

Calhoun Falls High School received funds in the amount of \$6,246 for purchases to support programs.



Abbeville County Career Center



Calhoun Falls High School

Demographics

Student Demographics	
White	2065
African American	1330
Hispanic	39
Asian	6
Other	60
*Total Enrollment 2007 (Based on 90 Day Enrollment)	3,616
Special Education Population	573
Suspensions	516
Expulsions	1
Retentions	96
Staff Demographics	
Total District Staff	547
Certified Staff	322
Support Staff	225
Total School Administrators	15
Principals	10
Assistant Principals	5
District Office Administrators	8

Did you know...

for the first time we were awarded district-wide accreditation through the Southern Association of Colleges and Schools/Council on Accreditation and School Improvement (SACS/CASI)?

Did you know...

we achieved an all-clear SACS/CASI accreditation status in district and all schools from 2005-2008 (100% certified & 99.6% highly qualified teaching force)?

Did you know...

that \$1,100,000 in scholarships was awarded to students in the 2007 graduating class?

Did you know...

we have single-gender classes at Diamond Hill Elementary School?

Did you know...

the Technology and Maintenance Depts. participate in the Work-Based Learning Program?

Did you know...

the completion rate of the district's GED program is 5th in the state?

Did you know...

the Technology Dept. maintains over 1000 workstations, 20 network servers and more than 20 different software applications?

Did you know...

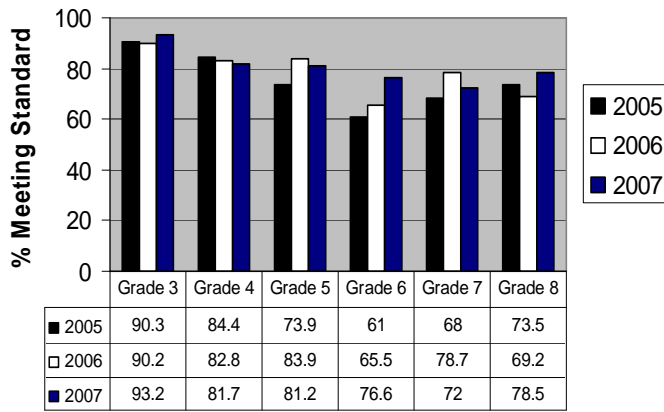
parents can keep track of their child's lunch account and pay without leaving their homes through ezschoolpay.com?

Did you know...

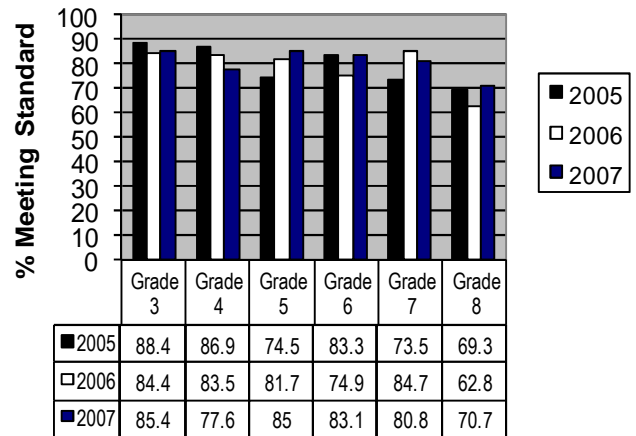
that the Special Education Department serves 573 students?

Student Achievement

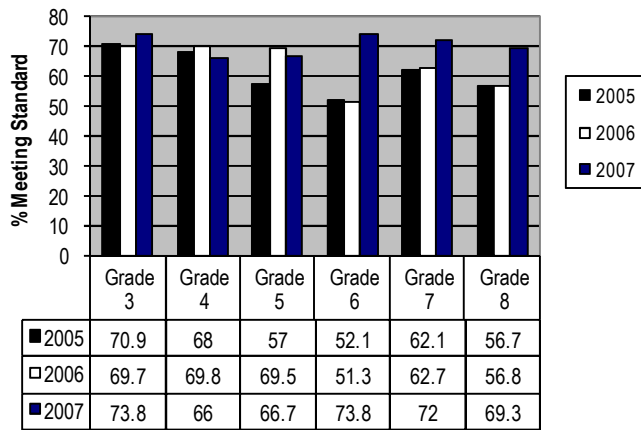
ELA PACT SCORES-ACSD



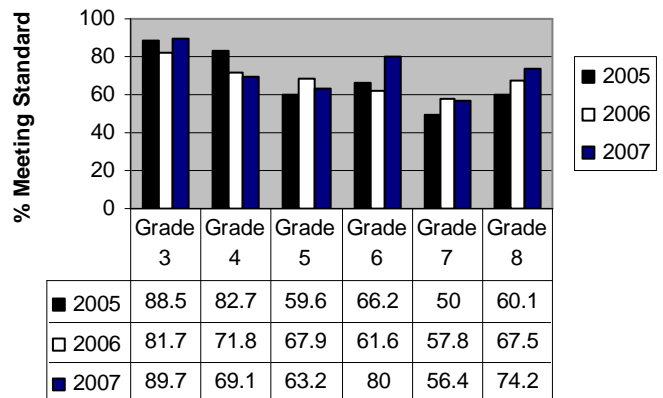
MATH PACT SCORES- ACSD



SCIENCE PACT SCORES-ACSD



SOCIAL STUDIES PACT SCORES-ACSD



HSAP Passage Rate (Both Test)

2005	2006	2007
94.0	92.5	92.2

Graduation Rate

2005	2006	2007
82.5	80.6	77.4

SAT Scores (Total Score)

2005	2006	2007
999	939	982

Did you know...

the SAT® measures the critical thinking, mathematical reasoning, and writing skills that students need to do college-level work?

ACT Scores (Total Score)

2005	2006	2007
17.5	17.7	17.8

Did you know...

the ACT® assesses high school students' general educational development and their ability to complete college-level work. The multiple-choice tests cover four skill areas: English, mathematics, reading, and science?

Financial Information

Revenue Sources for 2006-2007

State 52.63% (SDE/EFA and restricted programs)

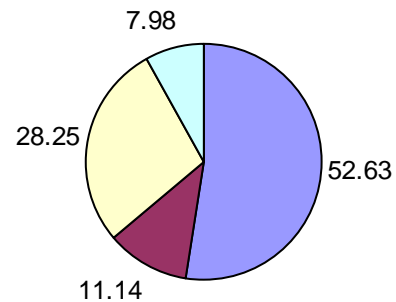
Local 28.25% (Funds from taxes collected and distributed by the county.)

Federal 11.4%

State Taxes 7.98% (Property Tax Relief, Homestead, Misc.)

(Funds from Federal Government for specific programs within the district.)

Revenue Sources for 2006-2007



Expenditure Sources for 2006-2007

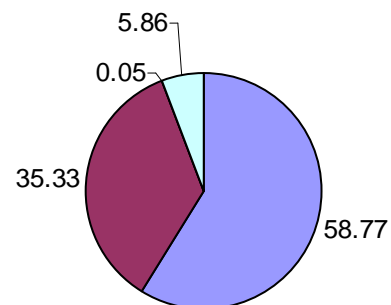
Instruction 58.77%

Support Services 35.33%

Other 5.86%

Community Services 0.05%

Expenditure Sources for 2006-2007



Personnel

Teachers of the Year

Gail Johnson

Cherokee Trail Elementary School

Amy Love-Johnson

Long Cane Elementary School

Amanda Strawhorn

Westwood Elementary School

Nancy Taylor

John C. Calhoun Elementary School

Reagan Cox

Diamond Hill Elementary School

Wendy Capps

Wright Middle School

Becky Fernandez

Abbeville High School

Mickie Ellis

Dixie High School

Terry Hogston

Calhoun Falls High School

Eddie Stone

Abbeville County Career Center

District Teacher of the Year

Becky Fernandez

National Board Certified Teachers

Abbeville County School District is fortunate to have 56 National Board Certified Teachers working with our students. There are 24 teachers in elementary, 5 in middle and 27 in high schools throughout our district.

Elementary Schools: Cherokee Trail-6

Diamond Hill-2

Long Cane -8

Westwood-8

Middle School: Wright -5

High Schools: Abbeville -18

Calhoun Falls -3

Dixie - 6

Did you know...

teacher retention rates have increase from 89.7% (05) to 91.5% (08)?

Did you know...

increased diversity recruitment efforts (classified and certified/highly qualified teachers of diversity) have produced a 50% increase from 2005 to 2008?

Did you know...

a Teacher Assistant-to-Teacher Program has been implemented in partnership with Erskine College as well as Project Create?

EIA Teacher Awards

Grants were submitted by teachers to the SC State Department of Education. In all 26 grants were submitted with 20 grants being approved for funding by the SC Department of Education totaling \$ 57,850!

*Abbeville County
Board of Trustees*

Mr. James B. Tisdale, Jr.

Chair

Dr. Bill Crenshaw

Vice-Chair

Ms. Corinna O'Bannon

Secretary

Mr. Samuel Bell

Mr. Mark Burton

Dr. Allen Kolb

Mr. Tim Rhodes

Mr. Joseph Reynolds

Mr. Marion Douglas Taylor

Beliefs, Vision and Mission of Abbeville County School District

Beliefs

Our vision and mission are guided by the following beliefs:

- *All individuals have worth and dignity.*
- *Respect for all should be modeled and encouraged.*
- *Quality education depends on involvement and shared responsibility of parents, students, educators and community.*
- *Education is the foundation of the community.*
- *Lifelong learning is the key to the future*
- *Effective teachers are essential for student success.*
- *Every child has a right to a quality education that meets the student's individual needs.*
- *Discipline is a vital part of education.*

Vision

Abbeville County School District will be a model of excellence in education.

Mission

The mission of the Abbeville County School District is to develop proficient, creative, self-motivated students by providing quality educational opportunities in a safe, nurturing environment, which supports innovations and lifelong learning.